

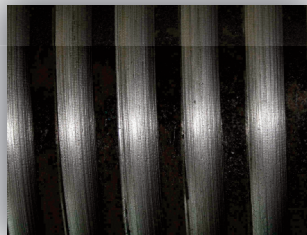
WW2000-3000-4000-5000-7500 ../D



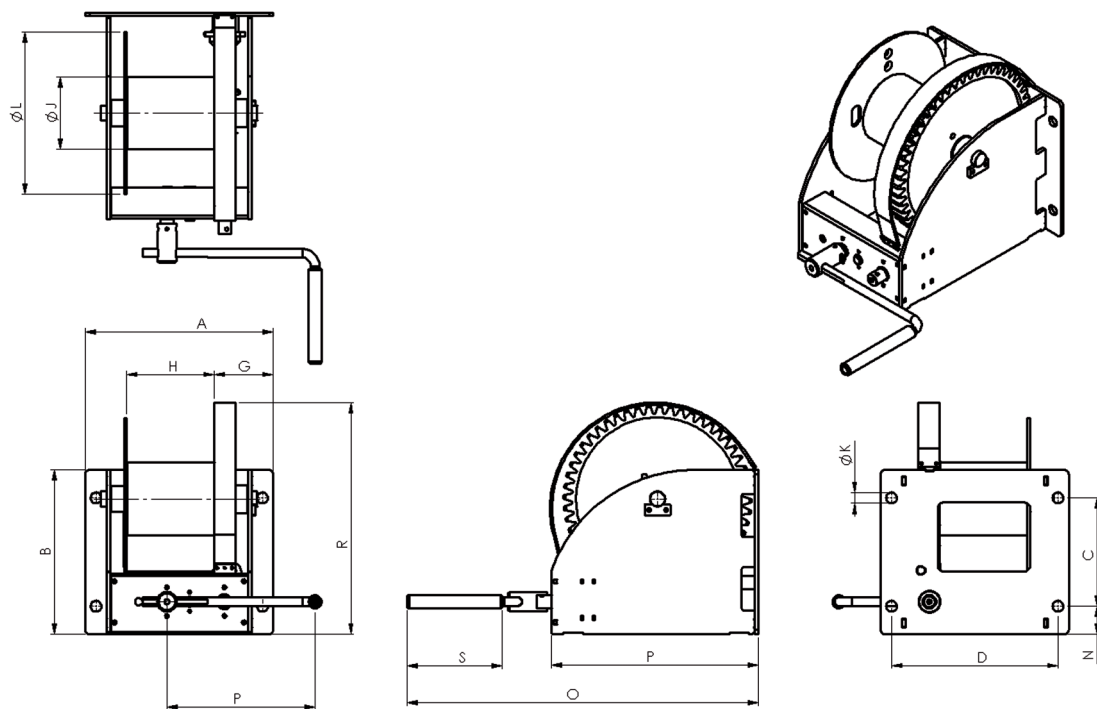
Worm gear winch

Hand operated worm gear winch:

- robust and safe hoisting winch, with two speeds
- static safety factor of 4
- square worm-wormwheel transmission and maintenance free bearing
- cable outlet on top or rear
- adjustable crank from 250 to 380 mm, with ergonomic plastic hand grip
- load pressure brake with double ratchet system
- standard paint finish 1 layer (60 - 80 Micron), or zinc-plated finish (6 - 8 Micron)
- grooved drum as extra option (GD instead of D)
- 2 cable compartments as extra option (2D instead of D), multi compartments upon request
- optional ATEX certified Ex II 3 GD T4, suitable for zone 2 and 22
type example WW2000 GR/D/Ex
- in compliance with EN 13157, DIN 15020 and Ex types ATEX 95 (94/9/EG)



Technical specifications WW2000-3000-4000-5000-7500 .. /D



Type	Mounting	Material finish	Remarks
WW2000 GR / D	Wall, 4x M20 class 8.8	Painted finish	RAL 7035 (grey)
WW2000 EV / D	Wall, 4x M20 class 8.8	Zinc-plated finish	
WW3000 GR / D	Wall, 4x M20 class 8.8	Painted finish	RAL 7035 (grey)
WW3000 EV / D	Wall, 4x M20 class 8.8	Zinc-plated finish	
WW4000 GR / D	Wall, 4x M20 class 8.8	Painted finish	RAL 7035 (grey)
WW4000 EV / D	Wall, 4x M20 class 8.8	Zinc-plated finish	
WW5000 GR / D	Wall, 4x M20 class 8.8	Painted finish	RAL 7035 (grey)
WW5000 EV / D	Wall, 4x M20 class 8.8	Zinc-plated finish	
WW7500 GR/D	Wall, 4x M20 class 8.8	Painted finish	RAL 7035 (grey)
WW7500 EV/D	Wall, 4x M20 class 8.8	Zinc-plated finish	

Dimensions (mm)	A	B	C	D	G	H	J	K	L	M	N	P	R	S
WW2000	410	310	196	360	137	177	133	25	312	372	57	380	434	220
WW3000	436	380	251	386	137	203	168	25	375	480	65	380	536	220
WW4000	436	380	251	386	137	203	168	25	375	480	65	380	536	220
WW5000	436	467	316	386	137	200	219	25	437	515	75	380	618	220
WW7500	510	500	350	455	189	202	245	25	630	635	75	380	748	220

Technical specifications	WW2000	WW3000	WW4000	WW5000	WW7500
Capacity:					
1 st cable layer	2000 kg	3000 kg	4000 kg	5000 kg	7500 kg
Last cable layer	1038 kg	1667 kg	2282 kg	3276 kg	3748 kg
Crankforce 1 st cable layer	24 (11) daN	31 (14) daN	30 (13) daN	73 (14) daN	78 (15) daN
Hoisting length by one rotation of crank , 1 st layer	12 (5) mm	11 (5) mm	11 (2) mm	13 (3) mm	11 (2) mm
Max. cable storage per compartment	75 m	68 m	53 m	43 m	72 m
Diameter cable (EN 12383-4)	11 mm	14 mm	16 mm	18 mm	22 mm
Min. breaking force of cable	63 kN	102 kN	133 kN	168 kN	251 kN
Own weight	60 kg	78 kg	80 kg	117 kg	190 kg