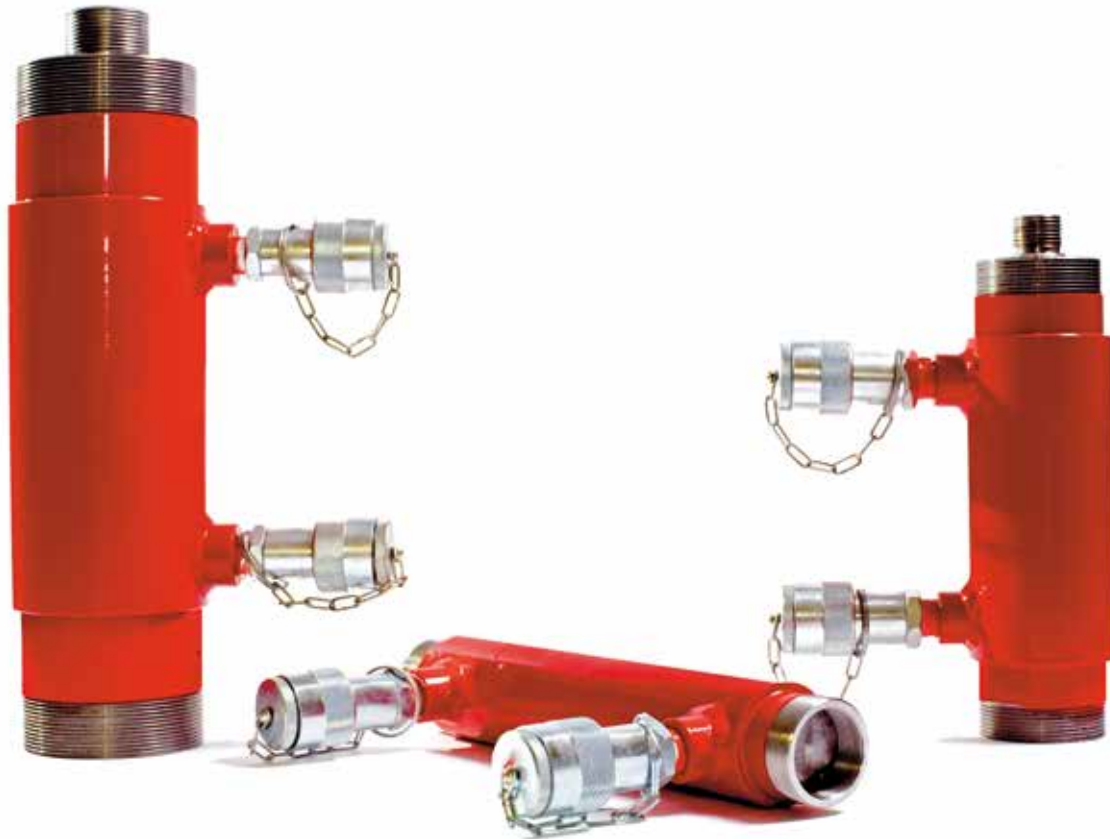


**CDE**

5-30 ton
Stroke 30-260 mm
700 bar

CDE
Series

Push-pull double-acting cylinders



- Double-acting cylinders.
- Threaded into the body and the rod, these cylinders are interfaced with more complex mechanical machinery with high-frequency push and pull cycles in civil engineering laboratories and in locking systems.
- A wide range of accessories, such as eye connectors, flanges, rings and plates, is also available.
- The stop ring not only guarantees maximum operator safety, preventing plunger over-stroke, but also outstanding eccentric load absorption.
- The wiper reduces contamination between ring and rod.

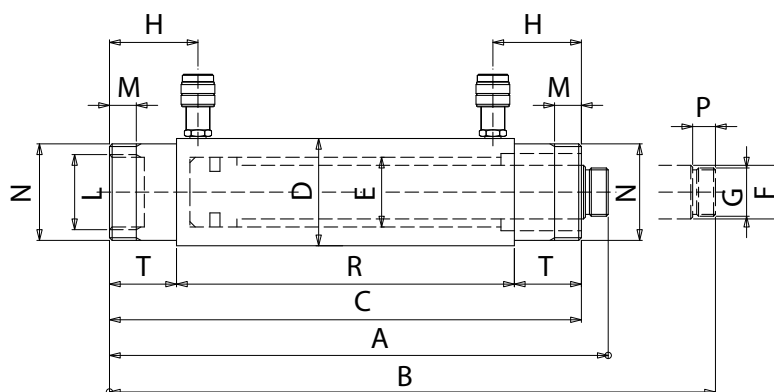
**SPECIAL CYLINDERS
ON REQUEST**



Systems for hot forming large support piles using 22-ton CDE cylinders with Viton gaskets to withstand high temperatures.



CDE 25/1650 (25 ton, stroke 1650 mm) double-acting cylinder, basculating with plate and pins.



CDE

CAP ton	STROKE mm	MODEL	FORCE MAX kN		SECTION cm ²		VOLUME cm ³		WEIGHT kg	DIMENSIONS in mm													
			Push	Pull	Push	Pull	Push	Pull		A	B	C	D	E	F	G	H	L	M	N	P	R	T
5	30	CDE-5/30	49.5	22.9	7.1	3.3	21.2	9.8	2.1	177	207	154	49	30	22	M 20x1.5	46	M 35x1.5	14	M 42x1.5	18	102	26
	60	CDE-5/60	49.5	22.9	7.1	3.3	42.4	19.6	2.7	207	267	184	49	30	22	M 20x1.5	46	M 35x1.5	14	M 42x1.5	18	132	26
	100	CDE-5/100	49.5	22.9	7.1	3.3	70.7	32.7	3.5	247	347	222	49	30	22	M 20x1.5	46	M 35x1.5	14	M 42x1.5	18	170	26
	160	CDE-5/160	49.5	22.9	7.1	3.3	113.1	52.3	4.3	307	467	284	49	30	22	M 20x1.5	46	M 35x1.5	14	M 42x1.5	18	232	26
10	60	CDE-10/60	111.3	68.2	15.9	9.7	95.4	58.5	5.7	243	303	223	68	45	28	M 24x2	56	M 48x1.5	16	M 60x2	18	153	35
	100	CDE-10/100	111.3	68.2	15.9	9.7	159	97.5	6.5	283	383	263	68	45	28	M 24x2	56	M 48x1.5	16	M 60x2	18	193	35
	160	CDE-10/160	111.3	68.2	15.9	9.7	254.5	155.9	8	343	503	323	68	45	28	M 24x2	56	M 48x1.5	16	M 60x2	18	253	35
	260	CDE-10/260	111.3	68.2	15.9	9.7	413.5	253.4	10.5	443	703	423	68	45	28	M 24x2	56	M 48x1.5	16	M 60x2	18	353	35
14	80	CDE-14/80	137.4	88	19.6	12.6	157.1	100.5	11	308	388	283	78	50	30	M 27x2	72	M 56x1.5	25	M 70x2	23	179	52
	160	CDE-14/160	137.4	88	19.6	12.6	314.2	201.1	13.5	388	548	363	78	50	30	M 27x2	72	M 56x1.5	25	M 70x2	23	259	52
	260	CDE-14/260	137.4	88	19.6	12.6	510.5	326.7	16	488	748	463	78	50	30	M 27x2	72	M 56x1.5	25	M 70x2	23	359	52
22	80	CDE-22/80	232.3	121	33.2	17.3	265.5	138.2	14	342	422	316	92	65	45	M40x2	89	M 70x2	26	M 85x2	24	186	65
	160	CDE-22/160	232.3	121	33.2	17.3	530.9	276.5	17.5	422	582	396	92	65	45	M40x2	89	M 70x2	26	M 85x2	24	266	65
	260	CDE-22/260	232.3	121	33.2	17.3	862.8	449.2	21.5	522	782	496	92	65	45	M 40x2	89	M 70x2	26	M 85x2	24	366	65
30	260	CDE-30/260	309.3	142.9	44.2	20.4	1148.6	530.9	33.5	532	782	504	113	75	55	M 50x2	94	M 80x2	28	M 105x2	24	360	72

Cylinders with higher tonnage and different strokes are also available.