

**CRI-FO**

30-150 ton  
Stroke 50-260 mm  
700 bar

**CRI-FO**  
Series

## Hollow cylinders with oil return

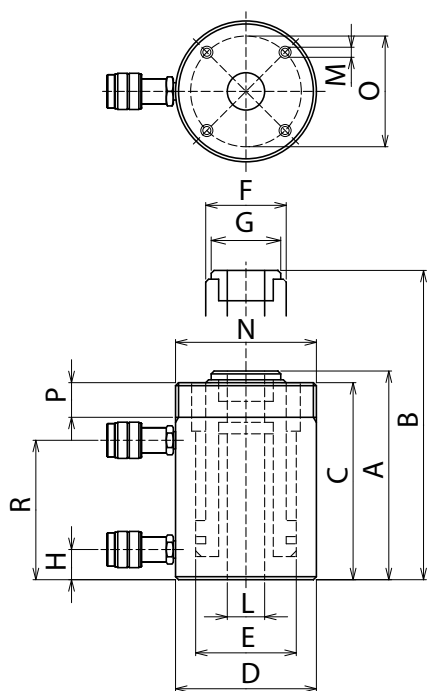


- Cylinders with a hollow center.
- Designed for cable tensioning operations, positioning bars in tensile structures, pulley assembly and disassembly, hoisting, and cable and tie rod pulling tests.
- With the oil return system strokes can be longer than in cylinders with a spring return. Thanks to the oil return system, return times are shorter and under all operating conditions.
- With the threaded body cylinder positioning is easier, more accurate and safer.
- The stop ring not only guarantees maximum operator safety, preventing plunger over-stroke, but also outstanding eccentric load absorption.
- The wiper reduces contamination between ring and rod.
- Hollow, high-strength, splined removable head.
- Models weighing more than 20 kg are equipped with a handle or lifting eyebolts to make them easier to carry.

**SPECIAL CYLINDERS  
ON REQUEST**



*Lifting sections of concrete structure bridges using 60 ton-capacity hollow cylinders and traction bars.*



## CRI-FO



CRI 100/150 FO and CRI 60/250 FO GS cylinders used for lifting structures in the infrastructure sector.



Hollow double-acting 800 ton-capacity cylinder.

CAP ton	STROKE mm	MODEL	FORCE max kN		SECTION cm <sup>2</sup>		VOLUME cm <sup>3</sup>		WEIGHT kg	DIMENSIONS in mm													
			Thrust	Traction	Thrust	Traction	Thrust	Traction		A	B	C	D	E	F	G	H	L	M	N	O	P	R
<b>30</b>	50	CRI-30/50-FO	295,3	29,4	42,2	19,6	211	99	11,7	177	227	165	115	86	70	64	27	33,5	2xM10	M115x2	65	20	120
	100	CRI-30/100-FO	295,3	29,4	42,2	19,6	422	197	15,3	236	336	224	115	86	70	64	27	33,5	2xM10	M115x2	65	20	175
	150	CRI-30/150-FO	295,3	29,4	42,2	19,6	633	295	18,3	286	436	274	115	86	70	64	27	33,5	2xM10	M115x2	65	20	225
	260	CRI-30/260-FO	295,3	29,4	42,2	19,6	1097	510	26,4	418	678	406	115	86	70	64	27	33,5	2xM10	M115x2	65	20	335
<b>60</b>	75	CRI-60/75-FO	589,6	77,8	84,2	51,8	632	389	25,1	207	282	200	160	125	95	90	30	54,5	2xM12	M160x4	130	35	143
	160	CRI-60/160-FO	589,6	77,8	84,2	51,8	1348	830	33,4	292	452	285	160	125	95	90	30	54,5	2xM12	M160x4	130	35	228
	260	CRI-60/260-FO	589,6	77,8	84,2	51,8	2191	1348	43,3	392	652	385	160	125	95	90	30	54,5	2xM12	M160x4	130	35	328
<b>100</b>	75	CRI-100/75-FO	947	121,6	135,28	81,09	1015	608	52	242	317	235	215	165	130	125	38	80,5	4xM12	M215x4	175	45	164
	150	CRI-100/150-FO	947	121,6	135,28	81,09	2029	1216	65,5	317	467	310	215	165	130	125	38	80,5	4xM12	M215x4	175	45	239
	260	CRI-100/260-FO	947	121,6	135,28	81,09	3517	2108	85,4	427	687	420	215	165	130	125	38	80,5	4xM12	M215x4	175	45	349
<b>150</b>	200	CRI-150/200-FO	1435	160,2	205	106,8	4100	2136	101	354	554	350	247	190	150	139	38	80,5	-	-	-	-	287

Cylinders with higher tonnage and different strokes are also available.