

RRI-300T TELEMETRY LOAD CELL

STANDARD FEATURES

- ▷ On/Off
- ▷ Tare
- ▷ Zero
- ▷ Peak hold
- ▷ Range 100m
- ▷ Battery level indicator
- ▷ Frequency 433 MHz
- ▷ Eight digit display
- ▷ Select units in lbs, kg, tonne or US Tons
- ▷ Rubber cover with lanyard
- ▷ Robust carry case
- ▷ Load cell battery lasts 6 months on standby
- ▷ Remote turn off on load cell
- ▷ Up to 99 ID address codes
- ▷ Replaceable batteries in display and cell

OPTIONAL FEATURES

- ▷ RS232C output for printer or data logging with Pipeline® software to PC or print mode
- ▷ AA Lithium batteries in handset for extended life
- ▷ Cell supplied for use with rechargeable Lithium-Ion battery pack and charger
- ▷ Auto turn off on display
- ▷ Backlit display
- ▷ Cabled models also available

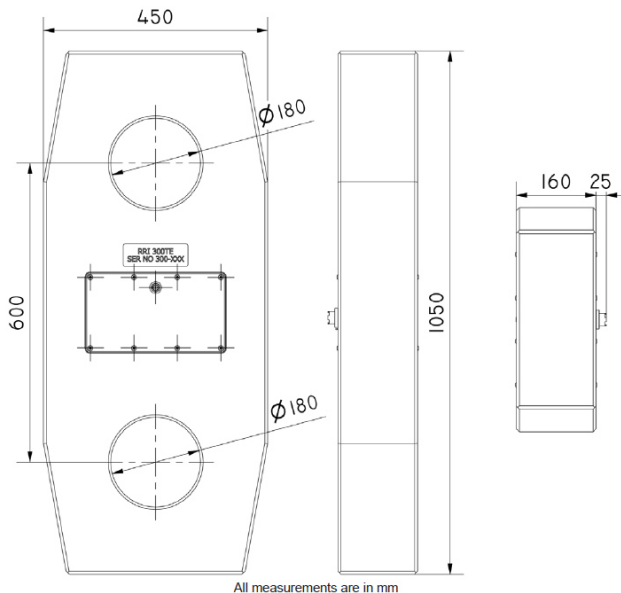


Image for illustration purposes only

Technical Specification	
Model	RRI-300T
Capacity	300 tonne
Resolution	1 kg
Accuracy	< +/- 1.0% of FSD*
Temp Range	-10°C to +40°C
Handset Dimensions	200mm x 95mm x 30mm (270g)
Handset Battery	3 x "AA" Alkaline
Battery Life	Alkaline "AA" continuous use: Minimum 75 hours** OR Rechargeable continuous use: 1 week**
Handset Display	8 digit x 8mm
Cell Weight	160 kg
Shackle Size	300 tonne

*Based on a BS1610 Grade 1 Calibration Machine
 **Depending on charge and conditions
 Information subject to change without notice