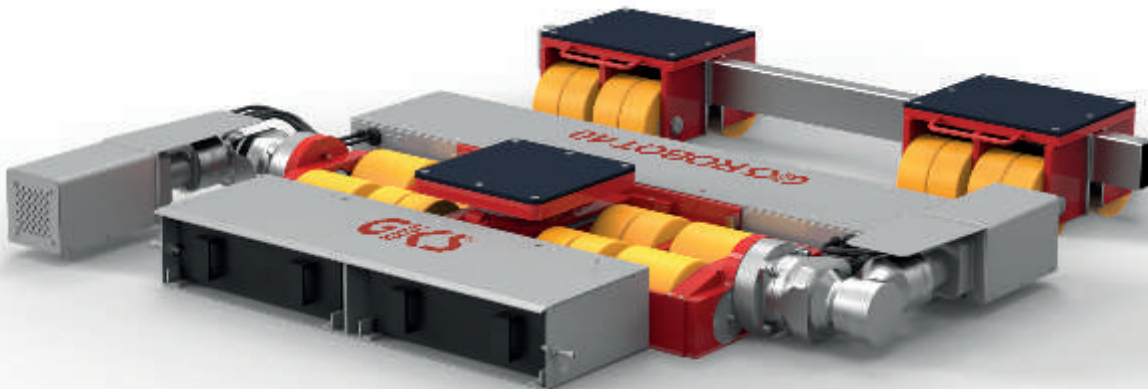




Transport System ROBOT 40 ▶▶ For heavy loads up to 40 t



- Remote control: Simultaneous forward/backward pushing of the controller moves the ROBOT forward/backward. Proportional speed control. Turning of the L-ROBOT on the spot under the load is possible
- Options: Quick charger (4 h), charging station for wall mounting, transport box, set of spare batteries, toe jack V15 with extended stroke



Transport System ROBOT 40

Technical data	L-ROBOT 20	F-ROBOT 20
Item number	14007	13636
Drive	DC Motor (24 V / 1,5 kW)	-
Battery Type	Li-Polymer	-
Operating time*	60 - 90 min	-
Reversing signal	Ja	-
Incline max. **	3 %	-
Loading height/no. of wheels	250 mm / 4 + 8 (154 + 76 mm wide)	250 mm / 16 (76 mm wide)
Dimensions (L x W x H)	1156 x 1748 x 250 mm	-
Contact surface	320 x 320 mm	310 x 379 mm
Connecting rod, adjustable	-	758 - 1600 mm
Total weight in kg	460 kg	140 kg
Load capacity	200 kN (20 t)	200 kN (20 t)
Max. load capacity	400 kN (40 t)	

* depending on the starting-up/stopping procedures

** use a locking device to prevent inadvertent rolling at gradients