

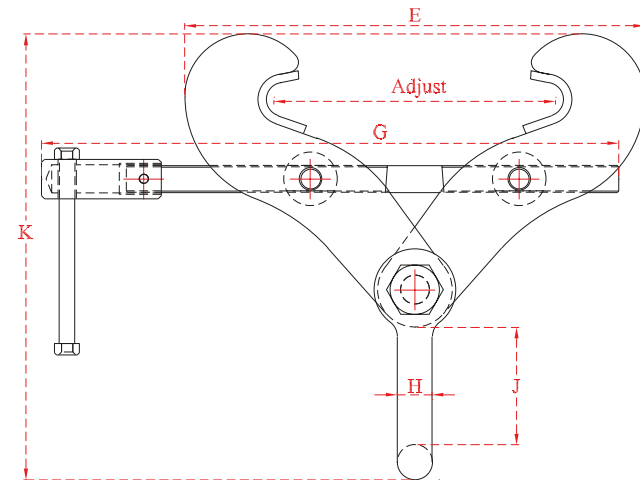
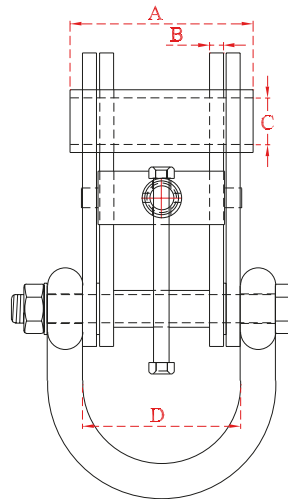
Worldwide Suppliers
of **Super Clamps**



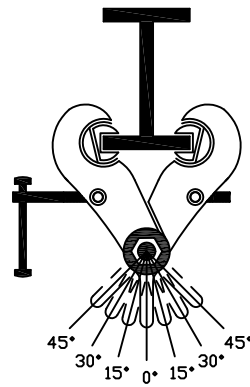
Fixed Jaw SUPERCLAMP Adjustable Girderclamps



Model	WLL	Adjust	Dimensions									Weight
			A	B	C	D	E	G	H	J	K	
S1	2032kg	76-190	125	3	22	90	188	275	20	77	250	4kg
S2	3048kg	76-190	125	6	22	90	188	275	20	77	250	5.1kg
S2A	3048kg	76-190	130	12.5	22	102	250	275	20	103	268	8kg
S2AX	3048kg	127-350	130	12.5	22	102	375	560	20	102	373	11.5kg
S3	4064kg	150-254	130	10	22	112	327	410	25	98	332	11kg
S3A	5080kg	150-305	140	12.5	32	116	373	410	25	110	360	15kg
S3X	5080kg	76-190	130	12.5	22	116	237	295	25	110	300	10kg
S4	7112kg	101-228	140	12.5	42	118	323	410	32	120	382	17.5kg
S4A	10160kg	203-457	140	20	42	118	498	560	32	112	476	28kg
S4S	6096kg	203-457	140	12.5	42	116	498	560	25	110	459	18.8kg
S12	15241kg	203-457	170	20	50	116.5	611	660	40	185	616	49.5kg
S14	15241kg	406-610	175	20	63	116.5	795	810	40	185	673	58.5kg



SIDE LOADED
ACROSS BEAM
ONLY, AS
ILLUSTRATED



Riley (Lifting Equipment) Ltd

REDUCTION IN WORKING LOAD LIMITS WHEN SIDE LOADS APPLIED

ANGLE FROM VERTICAL	0°	0° to 15°	15° to 30°	30° to 45°
REDUCTION FACTOR	NIL	17%	34%	50%
MODELS	WLL	WLL	WLL	WLL
S2A, S5A	3Ton	2.5Ton	2Ton	1.5Ton
S3	4Ton	3.3Ton	2.6Ton	2Ton
S3X, S3A, S6, S6A	5Ton	4.1Ton	3.3Ton	2.5Ton
S4	7Ton	5.8Ton	4.6Ton	3.5Ton
S4S	6Ton	5Ton	4Ton	3Ton
S4A, S11	10Ton	8.3Ton	6.6Ton	5Ton
S12, S14	15Ton	12.4Ton	10Ton	7.5Ton
S15, S16	20Ton	16.6Ton	13.2Ton	10Ton
S17, S18	25Ton	20.7Ton	16.5Ton	12.5Ton
S19, S20	30Ton	25Ton	19.8Ton	15Ton

The above working load limits and derations have been established specifically for most "S" type clamps and only apply in overhead beam attachment i.e. **DO NOT** apply if clamps are to be used for lifting beams. (Our side load clamps "USC range" has been specifically designed for this purpose). Literature is available on request. The tables apply to our clamps only (selected models) and we strongly advise that stress calculations should be carried out (by the user's engineering department) for all support steelwork.

WARNING: All clamps must be correctly applied to the beam by a competent person and fully hand tightened. If in doubt, contact the manufacturer for their recommendations.

NOTE: Clamp models S1, S2 and S5 are not suitable for any side loading as they are of lightweight design.