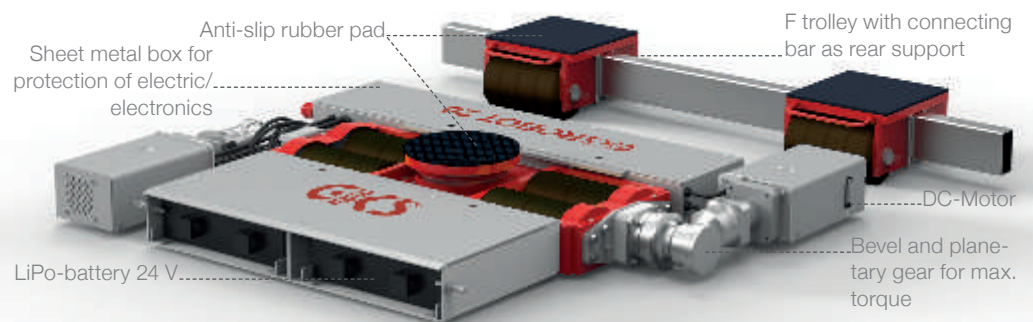


Remotely Operated and Battery Operated Transport Systems ROBOT 20 / 40

The remotely operated transport systems ROBOT 40 and ROBOT 20 are used for internal logistics or in an assembly line. Loads up to 40 t can be moved autonomously. Depending on the individual situation, the batteries will run up to 90 min. The ROBOT allows simultaneous driving and steering. It's ready-to-use delivered and independent from any external energy sources. The well proven 3-point support, consisting of the L-ROBOT in front and the F trolley as a rear support, allows easy and secure driving.

Transport System ROBOT 20

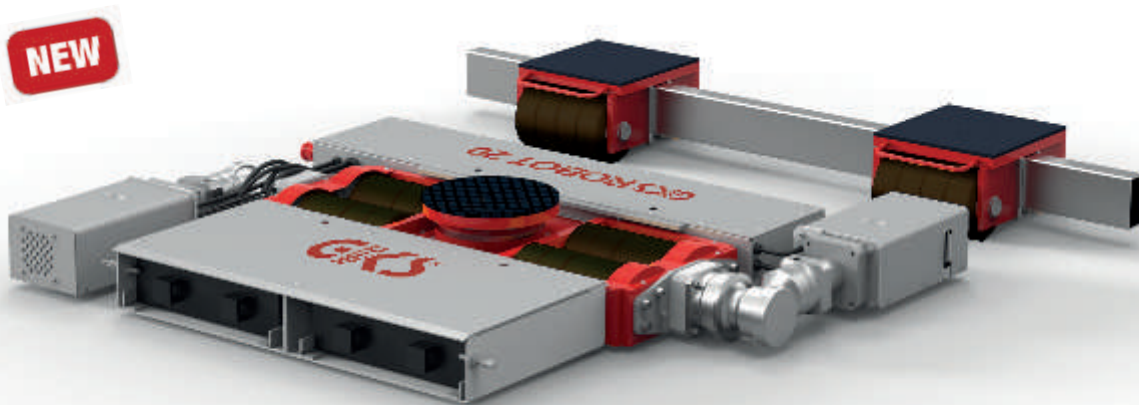




Transport System ROBOT 20 ▶▶ For heavy loads up to 20 t



- Depending on the load and starting-up/stopping procedures the batteries allow an operating time of 90 min. of max.
- Use of Li-Po-batteries (easy to recycle) for safety reasons
- Easy battery replacement through plug-in system, even under load
- Scope of delivery includes 2 standard chargers (12 h recharging time)



Transport System ROBOT 20

Technical data	L-ROBOT 10	F-ROBOT 10
Item number	14080	14081
Drive	DC Motor (24 V / 1000 W)	-
Battery Type	Li-Polymer	-
Operating time*	60 - 90 min	-
Reversing signal	Ja	-
Incline max. **	3 %	-
Loading height/no. of wheels	180 mm / 4 + 8 (105/53 mm wide)	180 mm / 18 (53 mm wide)
Dimensions (L x W x H)	1132 x 1326 x 180 mm	-
Contact surface	Ø 250	275 x 266 mm
Connecting rod, adjustable	-	532-1600 mm
Total weight in kg	255 kg	115 kg
Load capacity	100 kN (10t)	100 kN (10t)
Max. load capacity	200 kN (20 t)	

* depending on the starting-up/stopping procedures

** use a locking device to prevent inadvertent rolling at gradients