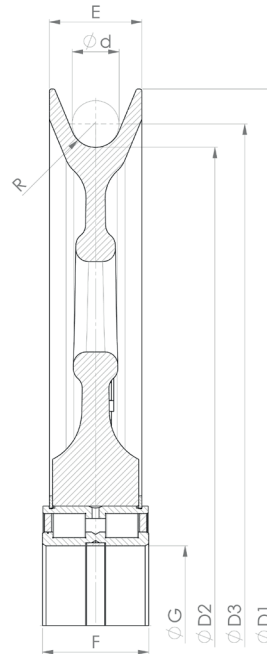


CAST SHEAVES >>

WITH CYLINDRICAL ROLLER BEARINGS



Model Nr.	Dimensions (mm)								Bearing	Weight (kg)
	Sheave tread ϕ	Shaft ϕ	For wire ϕd	Groove radius	Outer ϕ	P.C.D.	Rim width	Bearing width		
	$\phi D2$	ϕG	d	R	$\phi D1$	$\phi D3$	E	F		
SE.225.5012.7,5	225	60	14	7,5	260	239	38	46	SL04 5012 PP	6,6
SE.227.5010.7	227	50	13	7	265	240	35	40	SL04 5010 PP	5,3
SE.250.5008B.6	250	40	11	6	290	261	32	38	SL04 5008 PP	5,8
SE.250.5008B.5,5	250	40	10	5,5	290	260	32	38	SL04 5008 PP	5,9
SE.250.5008B.7,2	250	40	13	7,2	290	263	32	38	SL04 5008 PP	6,2
SE.260.5012.8,5	260	60	16	8,5	300	276	42	46	SL04 5012 PP	9,1
SE.260.5012.6,5	260	60	12	6,5	300	272	42	46	SL04 5012 PP	9,6
SE.260.5012.7,5	260	60	14	7,5	300	274	42	46	SL04 5012 PP	9,6
SE.280.5010.7	280	50	13	7	320	293	36	40	SL04 5010 PP	8,1
SE.280.5010B.7	280	50	13	7	320	293	36	40	SL04 5010 PP	8,1
SE.280.5012.8,5	280	60	16	8,5	320	296	42	46	SL04 5012 PP	9,1
SE.280.5012.8	280	60	15	8	320	295	42	46	SL04 5012 PP	9,2
SE.280.5012.7	280	60	13	7	320	293	42	46	SL04 5012 PP	9,4
SE.280.5012.10	280	60	19	10	320	299	42	46	SL04 5012 PP	10,3
SE.280.4914.8,5	280	70	16	8,5	320	296	36	60	SL01 4914 ZZ	8,8
SE.280.4914.7	280	70	13	7	320	293	36	30	SL01 4914 ZZ	9,1
SE.295.5008B.8,5	295	40	16	8,5	330	311	32	38	SL04 5008 PP	8,8
SE.300.5008.7	300	40	13	7	350	313	35	38	SL04 5008 PP	6,7
SE.300.5010.7	300	50	13	7	350	313	38	40	SL04 5008 PP	6,8
SE.320.5011.8,8.M	320	55	16	8,8	384	336	43	46	SL04 5011 PP	10,6
SE.320.4914.8,5	320	55	16	8,5	384	336	43	46	SL01 4914	12,9
SE.320.5013.9	320	65	17	9	384	337	43	46	SL04 5013 PP	13,2
SE.320.5013.10	320	65	19	10	365	339	42	46	SL04 5013 PP	13,2



- The dimensions in this table are indicative only. A drawing will always be submitted prior to production and will be the leading document when discussing dimensions.
- Sheaves shown here are standard models; inquiries for custom versions are welcome.



SEE OUR WARNING & SAFETY INFORMATION

<< CAST SHEAVES >>

WITH CYLINDRICAL ROLLER BEARINGS

Model Nr.	Dimensions (mm)								Bearing	Weight (kg)
	Sheave tread ø	Shaft ø	For wire ød	Groove radius	Outer ø	P.C.D.	Rim width	Bearing width		
	øD2	øG	d	R	øD1	øD3	E	F		
SE.320.5013.8,5	320	65	16	8,5	365	336	42	46	SL04 5013PP	13,5
SE.345.5010B.9,5	345	50	18	9,5	385	363	36	40	SL04 5010 PP	12,5
SE.345.5010B.10	345	50	19	10	385	364	36	40	SL04 5010 PP	12,5
SE.350.5012.8	350	60	14	8	415	364	45	46	SL04 5012 PP	12,6
SE.354.5013.9,5	354	65	18	9,5	400	372	42	46	SL04 5013 PP	16,5
SE.355.5013.10	355	65	19	10	410	374	42	46	SL04 5013 PP	17,8
SE.355.5013.9,5	355	65	18	9,5	410	373	42	46	SL04 5013 PP	18
SE.355.5013.9	355	65	17	9	410	372	42	46	SL04 5013 PP	18,1
SE.355.5013.8,5	355	65	16	8,5	410	371	42	46	SL04 5013 PP	18,3
SE.355.5016.7,5	355	80	14	7,5	410	369	55	60	SL04 5016 PP	16,8
SE.355.5016.10	355	80	19	10	410	374	55	60	SL04 5016 PP	16,8
SE.355.5016.12	355	80	22	12	410	377	55	60	SL04 5016 PP	16,8
SE.355.4918.12	355	90	22	12	410	377	44	35	SL01 4918 ZZ	15,1
SE.355.4918.9	355	90	17	9	410	372	44	35	SL01 4918 ZZ	16,1
SE.355.4918.8,5	355	90	16	8,5	410	371	44	35	SL01 4918 ZZ	16,2
SE.355.4918.9,5	355	90	18	9,5	410	373	44	35	SL01 4918 ZZ	17,9
SE.355.4918.10	355	90	19	10	410	374	44	35	SL01 4918 ZZ	18
SE.355.4926.9	355	130	17	9	410	372	59	50	SL01 4926 PP	23
SE.360.5016.10	360	80	19	10	420	379	55	60	SL04 5016 PP	17,9
SE.360.5016.9,5	360	80	18	9,5	420	378	55	60	SL04 5016 PP	21,6
SE.360.5016.8,5	360	80	16	8,5	420	376	55	60	SL04 5016 PP	21,9
SE.360.4918.10	360	90	19	10	420	379	44	35	SL01 4918 ZZ	18,6
SE.360.4918.9,5	360	90	18	9,5	420	378	44	35	SL01 4918 ZZ	18,8
SE.360.4918.8,5	360	90	16	8,5	420	376	44	35	SL01 4918 ZZ	19,1
SE.373.5018.12	373	90	22	12	440	395	51	67	SL04 5018 PP	24,6
SE.400.5013.10	400	65	19	10	460	419	43	46	SL04 5013 PP	24,8
SE.400.5013.9,5	400	65	18	9,5	460	418	43	46	SL04 5013 PP	25
SE.400.5013.8,5	400	65	16	8,5	460	416	43	46	SL04 5013 PP	25
SE.400.5014B.11,5	400	70	21	11,5	460	421	49	54	SL04 5014 PP	24,7
SE.400.5014B.10	400	70	19	10	460	419	49	54	SL04 5014 PP	25
SE.400.5014B.9,5	400	70	18	9,5	460	418	49	54	SL04 5014 PP	25
SE.400.5016.12.A	400	80	22	12	460	422	50	60	SL04 5016 PP	26
SE.400.5016.15	400	80	28	15	460	428	72	60	SL04 160 PP	28
SE.400.5016.12	400	80	22	12	460	422	55	60	SL04 5016 PP	28
SE.400.5016.11,5	400	80	21	11,5	460	421	55	60	SL04 5016 PP	28
SE.400.5016.10	400	80	19	10	460	419	55	60	SL04 5016 PP	29
SE.400.4918.10	400	90	19	10	460	419	44	35	SL01 4918 ZZ	26
SE.400.5018.9,5	400	90	18	9,5	460	418	72	67	SL04 160 PP	28
SE.400.5018.12	400	90	22	12	460	422	62	67	SL04 5018 PP	30
SE.400.5018.11,5	400	90	21	11,5	460	421	62	67	SL04 5018 PP	30
SE.400.5018.10	400	90	19	10	460	419	62	67	SL04 5018 PP	31
SE.400.4922.10	400	110	19	10	460	419	50	40	SL01 4922 PP	25

- The dimensions in this table are indicative only. A drawing will always be submitted prior to production and will be the leading document when discussing dimensions.
- Sheaves shown here are standard models; inquiries for custom versions are welcome.



SEE OUR WARNING & SAFETY INFORMATION

<< CAST SHEAVES >>

WITH CYLINDRICAL ROLLER BEARINGS

Model Nr.	Dimensions (mm)								Bearing	Weight (kg)
	Sheave tread ϕ	Shaft ϕ	For wire ϕ d	Groove radius R	Outer ϕ	P.C.D. ϕ D3	Rim width E	Bearing width F		
	ϕ D2	ϕ G	d	R	ϕ D1	ϕ D3	E	F		
SE.400.4924.10	400	120	19	10	460	419	55	45	SL04 160 PP	26
SE.400.160.9,5	400	160	18	9,5	460	418	72	80	SL04 160 PP	34
SE.400.160.12	400	160	22	12	460	422	72	80	SL04 160 PP	34
SE.438.5018.12	438	90	22	12	500	460	58	67	SL04 5018 PP	28
SE.450.5018.15	450	90	28	15	515	478	62	67	SL04 5018 PP	39
SE.450.5018.13,5	450	90	25	13,5	515	475	62	67	SL04 5018 PP	40
SE.450.5018.12	450	90	22	12	515	472	62	67	SL04 5018 PP	41
SE.450.5018.10	450	90	19	10	515	469	62	67	SL04 5018 PP	41
SE.450.5018.10,5	450	90	20	10,5	515	470	62	67	SL04 5018 PP	41
SE.450.5018.13	450	90	24	13	515	474	62	67	SL04 5018 PP	41
SE.450.5024.15	450	120	28	15	515	478	75	80	SL04 5024 PP	46
SE.450.5024.13,5	450	120	25	13,5	515	475	75	80	SL04 5024 PP	46
SE.450.5024.12	450	120	22	12	515	472	75	80	SL04 5024 PP	47
SE.450.5024.10	450	120	19	10	515	469	75	80	SL04 5024 PP	48
SE.450.4926.12	450	130	22	12	515	472	60	50	SL01 4926 PP	38
SE.450.4926.10	450	130	19	10	515	469	60	50	SL01 4926 PP	38
SE.450.4926.13,5	450	130	25	13,5	515	475	60	50	SL01 4926 PP	42
SE.450.4830.10	450	150	19	10	515	469	55	40	SL01 4830	35
SE.450.160.10	450	160	19	10	515	469	75	80	SL04 160 PP	45
SE.482.5018.11	482	90	20	11,5	560	502	62	67	SL04 5018 PP	46
SE.482.5018.11,5	482	90	21	11,5	560	503	62	67	SL04 5018 PP	46
SE.482.5018.12	482	90	21	11,5	560	503	62	67	SL04 5018 PP	46
SE.482.5018.10,5	482	90	20	10,5	560	502	62	67	SL04 5018 PP	46
SE.482.5024.11	482	120	20	11	560	502	62	80	SL04 5024 PP	50
SE.482.160.11	482	160	20	11	560	502	62	80	SL04 160 PP	49
SE.500.5018B.13,5	500	90	25	13,5	570	525	61	67	SL04 5018 PP	47
SE.511.5020.10.M	511	100	19	10	584	530	57	67	SL04 5020 PP	29
SE.528.5018.14	528	90	26	14	595	554	61	67	SL04 5018 PP	45
SE.528.5018.15	528	90	28	15	595	556	61	67	SL04 5018 PP	50
SE.528.5018.13,5	528	90	25	13,5	595	553	61	67	SL04 5018 PP	51
SE.528.5018.12	528	90	22	12	595	550	61	67	SL04 5018 PP	51
SE.528.5018.13	528	90	24	13	595	552	61	67	SL04 5018 PP	51
SE.528.5018.14.B	528	90	26	14	595	554	61	67	SL04 5018 PP	51
SE.528.5024.15	528	120	28	15	595	556	74	80	SL04 5024 PP	57
SE.528.5024.13,5	528	120	25	13,5	595	553	74	80	SL04 5024 PP	58
SE.528.5024.14	528	120	26	14	595	554	74	80	SL04 5024 PP	64
SE.528.160.15	528	160	28	15	595	556	72	80	SL04 160 PP	53
SE.528.160.14	528	160	26	14	595	554	74	80	SL04 160 PP	53
SE.528.160.13,5	528	160	25	13,5	595	553	74	80	SL04 160 PP	54
SE.528.160.13	528	160	24	13	595	552	74	80	SL04 160 PP	61
SE.528.4836.13	528	180	24	13	595	552	59	45	SL01 4836 PP	48
SE.528.200.13	528	200	24	13	595	552	74	80	SL04 200 PP	57

- The dimensions in this table are indicative only. A drawing will always be submitted prior to production and will be the leading document when discussing dimensions.
- Sheaves shown here are standard models; inquiries for custom versions are welcome.



SEE OUR WARNING & SAFETY INFORMATION

<< CAST SHEAVES >>

WITH CYLINDRICAL ROLLER BEARINGS

Model Nr.	Dimensions (mm)								Bearing	Weight (kg)
	Sheave tread ϕ	Shaft ϕ	For wire ϕ d	Groove radius R	Outer ϕ	P.C.D. ϕ D3	Rim width E	Bearing width F		
	ϕ D2	ϕ G	d	R	ϕ D1	ϕ D3	E	F		
SE.528.200.13,5	528	200	25	13,5	595	553	74	80	SL04 200 PP	57
SE.528.200.15	528	200	28	15	595	556	74	80	SL04 200 PP	65
SE.536.130.14.M	536	130	26	14	610	562	65	80	SL04 130 PP	45
SE.575.5022.16	575	110	30	16	650	605	74	80	SL04 5022 PP	72
SE.575.5022.14	575	110	26	14	650	601	74	80	SL04 5022 PP	74
SE.575.5022.15	575	110	28	15	650	603	74	80	SL04 5022 PP	74
SE.575.5024.17	575	120	32	17	650	607	74	80	SL04 5024 PP	71
SE.575.5024.15	575	120	28	15	650	603	74	80	SL04 5024 PP	72
SE.575.5024.16	575	120	30	16	650	605	74	80	SL04 5024 PP	72
SE.575.5024.14	575	120	26	14	650	601	74	80	SL04 5024 PP	73
SE.575.160.15	575	160	28	15	650	603	74	80	SL04 160 PP	71
SE.575.160.14	575	160	26	14	650	601	74	80	SL04 160 PP	72
SE.575.200.15	575	200	28	15	650	603	74	80	SL04 200 PP	76
SE.575.200.14	575	200	26	14	650	601	74	80	SL04 200 PP	77
SE.630.5022B.16	630	110	30	16	710	660	74	80	SL04 5022 PP	84
SE.630.5024.17	630	120	32	17	710	662	74	80	SL04 5024 PP	83
SE.630.5024.16	630	120	30	16	710	660	74	80	SL04 5024 PP	84
SE.630.5024.15	630	120	28	15	710	658	74	80	SL04 5024 PP	84
SE.630.160.17	630	160	32	17	710	662	74	80	SL04 160 PP	81
SE.630.160.16	630	160	30	16	710	660	74	80	SL04 160 PP	82
SE.630.160.15	630	160	28	15	710	658	74	80	SL04 160 PP	83
SE.630.200.17	630	200	32	17	710	662	74	80	SL04 200 PP	86
SE.630.200.16	630	200	30	16	710	660	74	80	SL04 200 PP	87
SE.630.200.15	630	200	28	15	710	658	74	80	SL04 200 PP	88
SE.646.5030.18	646	150	34	18	740	680	80	100	SL04 5030 PP	91
SE.670.5024.17	670	120	32	17	760	702	74	80	SL04 5024 PP	90
SE.670.5024.15	670	120	28	15	760	698	74	80	SL04 5024 PP	91
SE.670.5024.13,5	670	120	25	13,5	760	695	74	80	SL04 5024 PP	93
SE.670.160.17	670	160	32	17	760	702	74	80	SL04 160 PP	91
SE.670.160.15	670	160	28	15	760	698	74	80	SL04 160 PP	92
SE.670.160.13,5	670	160	25	13,5	760	695	74	80	SL04 160 PP	94
SE.670.200.13,5	670	200	25	13,5	760	695	74	80	SL04 200 PP	94
SE.670.200.17	670	200	32	17	760	702	74	80	SL04 200 PP	95
SE.670.200.15	670	200	28	15	760	698	74	80	SL04 200 PP	97
SE.685.5028.16	685	140	30	16	793	715	90	95	SL04 5028 PP	127
SE.685.5028.18	685	140	34	18	793	719	90	95	SL04 5028 PP	127
SE.688.5024.17	688	120	32	17	780	720	74	80	SL04 5024 PP	105
SE.688.5036.17	688	180	32	17	780	720	74	136	SL04 5036 PP	125
SE.710.5022.18	710	110	34	18	800	744	72	80	SL04 5022 PP	99
SE.710.5022.17	710	110	32	17	800	742	72	80	SL04 5022 PP	100
SE.710.5024.18	710	120	34	18	800	744	72	80	SL04 5024 PP	95
SE.710.5024.20	710	120	38	20	800	748	72	80	SL04 5024 PP	95

- The dimensions in this table are indicative only. A drawing will always be submitted prior to production and will be the leading document when discussing dimensions.
- Sheaves shown here are standard models; inquiries for custom versions are welcome.



SEE OUR WARNING & SAFETY INFORMATION

<< CAST SHEAVES >>

WITH CYLINDRICAL ROLLER BEARINGS

Model Nr.	Dimensions (mm)								Bearing	Weight (kg)
	Sheave tread ϕ	Shaft ϕ	For wire ϕd	Groove radius	Outer ϕ	P.C.D.	Rim width	Bearing width		
	$\phi D2$	ϕG	d	R	$\phi D1$	$\phi D3$	E	F		
SE.710.5026.18	710	130	34	18	800	744	78	95	SL04 5026 PP	98
SE.710.5028.18	710	140	34	18	810	744	85	95	SL04 5028 PP	107
SE.710.5028.17	710	140	32	17	810	742	85	95	SL04 5028 PP	108
SE.710.5030.18	710	150	34	18	810	744	90	100	SL04 5030 PP	108
SE.710.5030.17	710	150	32	17	810	742	90	100	SL04 5030 PP	109
SE.720.5030.18	720	150	34	18	830	754	90	100	SL04 5030 PP	113
SE.750.226.13	750	260	24	13	830	774	72	94	SL04 260 PP	163
SE.760.5026.20,5	760	130	39	20,5	860	799	75	95	SL04 5026 PP	138
SE.760.5030.20	760	150	38	20	860	798	85	100	SL04 5030 PP	134
SE.760.220.22	760	220	41	22	880	801	90	95	SL04 220 PP	143
SE.760.220.21	760	220	40	21	880	800	90	95	SL04 220 PP	144
SE.800.5022.16,5	800	110	31	16,5	890	831	70	80	SL04 5022 PP	137
SE.800.5024.16	800	120	30	16	890	830	70	80	SL04 5024 PP	127
SE.800.5024.20	800	120	38	20	890	838	70	80	SL04 5024 PP	127
SE.800.5026.17	800	130	32	17	890	832	75	95	SL04 5026 PP	130
SE.800.5026.18	800	130	34	18	890	834	75	95	SL04 5026 PP	134
SE.800.5026.20	800	130	38	20	890	838	75	95	SL04 5026 PP	134
SE.800.5028.22,5	800	140	42	22,5	890	842	85	95	SL04 5028 PP	149
SE.800.5028.21	800	140	40	21	890	840	85	95	SL04 5028 PP	150
SE.800.5028.20	800	140	38	20	890	838	85	95	SL04 5028 PP	151
SE.800.5028.19	800	140	36	19	890	836	85	95	SL04 5028 PP	152
SE.800.5030.23,5	800	150	44	23,5	890	844	90	100	SL04 5030 PP	150
SE.800.5030.21	800	150	40	21	890	840	90	100	SL04 5030 PP	152
SE.800.5030.20	800	150	38	20	890	838	90	100	SL04 5030 PP	153
SE.800.5030.22,5	800	150	42	22,5	890	842	90	100	SL04 5030 PP	160
SE.816.5028.18	816	140	34	18	916	850	80	95	SL04 5028 PP	146
SE.822.5026.15	822	130	28	15	906	850	75	95	SL04 5026 PP	126
SE.830.232.15	830	160	28	15	910	858	73	48	2x NJ-232-E	222
SE.850.232.15	850	160	28	15	940	878	80	48	2x NJ-232-E	199
SE.864.324.15	864	120	28	15	975	892	100	55	2x NJ-324-E	155
SE.864.324.19	864	120	36	19	975	900	100	55	2x NJ-324-E	155
SE.874.5036.23,5	874	180	44	23,5	1004	918	107	136	SL04 5036 PP	256
SE.876.260.26,5	876	260	50	26,5	1016	926	103	94	SL04 260 PP	240
SE.900.5026.19	900	130	36	19	1010	936	87	95	SL04 5026 PP	175
SE.900.5030.22,5	900	150	42	22,5	1010	942	87	100	SL04 5030 PP	177
SE.900.5030.23,5	900	150	44	23,5	1010	944	87	100	SL04 5030 PP	177
SE.900.5030.25,5	900	150	48	25,5	1010	948	87	100	SL04 5030 PP	177
SE.950.260.26,5	950	260	50	26,5	1094	1000	110	94	SL04 260 PP	255
SE.960.5034.21,5,H	960	170	40	21,5	1080	1000	110	122	SL04 5034 PP	257
SE.960.5034.23,5	960	170	44	23,5	1080	1004	110	122	SL04 5034 PP	257
SE.960.5036.21,5	960	180	40	21,5	1080	1000	110	136	SL04 5036 PP	260
SE.960.5036.21,5,H	960	180	40	21,5	1080	1000	110	136	SL04 5036 PP	263

- The dimensions in this table are indicative only. A drawing will always be submitted prior to production and will be the leading document when discussing dimensions.
- Sheaves shown here are standard models; inquiries for custom versions are welcome.



SEE OUR WARNING & SAFETY INFORMATION

<< CAST SHEAVES

WITH CYLINDRICAL ROLLER BEARINGS

Model Nr.	Dimensions (mm)								Bearing	Weight (kg)
	Sheave tread \varnothing	Shaft \varnothing	For wire \varnothing d	Groove radius	Outer \varnothing	P.C.D.	Rim width	Bearing width		
	\varnothing D2	\varnothing G	d	R	\varnothing D1	\varnothing D3	E	F		
SE.960.5038.21,5	960	190	40	21,5	1080	1000	110	136	SL04 5038 PP	260
SE.960.5040.21,5,H	960	200	40	21,5	1080	1000	110	150	SL04 5040 PP	267
SE.1004.5030.27	1004	150	51	27,2	1119	1055	95	100	SL04 5030 PP	198
SE.1010.5022.18,5	1010	110	35	18,5	1115	1045	80	65	SL04 5022 PP	199
SE.1040.5034.30	1040	170	56	30	1180	1096	114	122	SL04 5034PP	279
SE.1040.5034.23,5	1040	170	44	23,5	1180	1084	110	99	SL04 5034 PP	288
SE.1040.5036.26,5	1040	180	50	26,5	1180	1090	114	110	SL04 5036 PP	323
SE.1040.5038.30	1040	190	56	30	1180	1096	114	136	SL04 5038PP	285
SE.1060.5044.37	1060	220	70	37	1200	1130	140	149	SL04 5044 PP	478
SE.1120.5034.29,5	1120	170	55	29,5	1280	1175	125	99	SL04 5034 PP	398
SE.1120.5038.27	1120	190	51	27	1280	1171	125	110	SL04 5038 PP	406
SE.1130.5044.27	1130	220	51	27	1300	1181	146	130	SL04 5044 PP	487
SE.1200.5040.27,5	1200	200	52	27,5	1370	1252	140	120	SL04 5040PP	518
SE.1200.5044.32	1200	220	60	32	1370	1260	146	160	SL04 5044 PP	511
SE.1250.5044.29	1250	220	54	29	1415	1304	135	130	SL04 5044 PP	663
SE.1280.5044.34	1280	220	64	34	1470	1344	148	160	SL04 5044 PP	624
SE.1280.5044.30	1280	220	56	30	1470	1336	148	130	SL04 5044 PP	629
SE.1280.5044.32	1280	220	60	32	1470	1340	148	130	SL04 5044 PP	629
SE.1445.5052.39,5	1445	260	75	39,5	1661	1520	170	154	SL04 5052 PP	1021
SE.1540.5056.38	1450	280	72	38	1745	1522	170	154	SL04 5056 PP	1130
SE.1820.5052.39,5	1820	260	75	39,5	2046	1895	170	154	SL04 5052 PP	1333
SE.2660.5056.38	2660	280	72	38	2865	2732	160	190	SL04 5056 PP	2319

- The dimensions in this table are indicative only. A drawing will always be submitted prior to production and will be the leading document when discussing dimensions.
- Sheaves shown here are standard models; inquiries for custom versions are welcome.



SEE OUR WARNING & SAFETY INFORMATION