

## Wireless Load Cell/Load Link with Readout instrument



This wireless load link is designed to be light, accurate and easy to handle. It is supplied with a handheld monitor/indicator unit, calibration certificate, manual and a plastic carrying case.

Fits Standard Safety Shackles

Capacities from 5 t to 300 t

### GIGASENSE

Gigasense products within Force Measurement and Crane Safety are well known high quality products, built from many years' experience and used by leading heavy duty industry around the world.

Gigasense products meet the highest demands of performance level requirements.

We are represented by many selected local partners in more than 30 countries on six continents.

# Wireless Load Cell/Load Link with Readout instrument

## Function

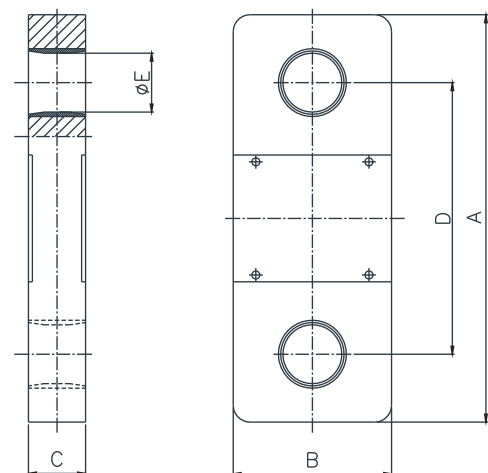
Both the load cell and the hand held unit are self contained, battery powered, why no cables are needed. The material is lightweight aerospace alloy.

The accuracy is better than 0,3% of full scale load. The readout monitor instrument is hermetically sealed for use in wet conditions.

Many load cells can be connected to one - in this case a special - hand held readout device, useful in for example the application of container lifting.



| Specifications      |  |
|---------------------|--|
| Display Units       | t (metric ton), other units on request |
| Display Resolution  | <0,1% of Full Scale                    |
| Max. Deviation      | ±0,25% of Applied Load                 |
| Non-Repeatability   | ±0,02% of Full Scale                   |
| Temp. Range         | 0 to 50 °C                             |
| Battery Life        | Min.250 hours (continuous)             |
| Protection Class    | IP65                                   |
| Radio Power         | 1 mW                                   |
| Radio Freq.         | 2,4 GHz<br>License Exempt              |
| Wireless Range      | 100m (line of sight)                   |
| Standard Functions: |  |
| On/Off Switch       |  |
| Tare                |  |



| Type                  | WLL 5 | WLL 12 | WLL 25 | WLL 50 | WLL 100 | WLL 200 | WLL 300 |
|-----------------------|-------|--------|--------|--------|---------|---------|---------|
| Capacity - WLL (ton)  | 5     | 12     | 25     | 50     | 100     | 200     | 300     |
| Display division (kg) | 1     | 5      | 10     | 10     | 100     | 100     | 200     |
| Safety Factor - S.F.  | 5:1   |        |        |        |         |         |         |
| Overload Capacity     | 200%  |        |        |        |         |         |         |
| Dimension A (mm)      | 250   | 290    | 320    | 430    | 600     | 700     | 800     |
| Dimension B (mm)      | 95    | 101    | 127    | 152    | 265     | 325     | 375     |
| Dimension C (mm)      | 35    | 48     | 55     | 75     | 100     | 150     | 180     |
| Dimension D (mm)      | 170   | 180    | 200    | 250    | 320     | 350     | 420     |
| Dimension E (mm)      | 27    | 40     | 55     | 76     | 100     | 146     | 162     |
| Weight (kg)           | 6     | 7      | 9      | 12     | 50      | 105     | 170     |

